

# CASIO®

the unexpected **extra**

• **10-key pad**



## CASSIOPEIA

# IT-70

Windows® Powered Pocket PC  
Industrial CASSIOPEIA

## Features

- **Splash Resistant**
- **Drop Resistant**
- **Open Architecture**
- **Optional Barcode Laser**
- **Optional Battery Packs**
- **10-Key Pad**

### **RF Wireless LAN version available as Model IT-70RF.**

RF Wireless LAN – The IT-700RF is supplied with an integrated 2.4GHz spread spectrum radio frequency (RF) transceiver.

This is compliant with the IEEE802.11b open standard. Consequently, this model is wireless-ready out of the box for local area network (LAN) connectivity. It can be seamlessly integrated into any IEEE802.11b network. Rapid response times are assured with a transmission speed of up to 11Mbps. A host of Pocket PC terminal emulation software developed by third party software houses provide a fast, reliable and low-risk method to extend the use of the portables into warehouses which were previously the preserve of immobile mainframe terminals.

### **New Optional CDPD Wireless Modem**

**PocketSpider®** – the first wireless (CDPD) modem designed exclusively for a CompactFlash slot.

### **Wireless support for browser-based applications.**

Perfect tool for sales and field force automation.

Stay in touch with the new PocketSpider wireless CDPD modem. A subscription to an ISP is required.

## Rugged Pocket PC

- **Industrial design** – Water resistant and drop testing enable reliable outdoor use for field service and sales force automation applications.
- **Microsoft Pocket PC** – Familiarity of Microsoft® Windows enables easy development and wide software support.
- **Mono, STN touch display** is ideal for merchandising and store planning applications.
- **Bar code laser scanning** – Optional and sold separately.
- **Flexibility** – 32MB RAM for large database applications and upgradeability via compact flash port.

# IT-70

## GENERAL GUIDE



IT-70M30E : Monochrome LCD touch panel  
 IT-70M30RC : Monochrome LCD touch panel and RF module  
 IT-700M30E : Colour LCD touch panel  
 IT-700M30RC : Colour LCD touch panel and RF module

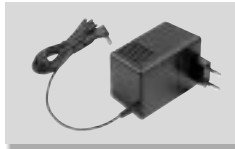
## OPTIONS



DT-7601OE Satellite I/O Box



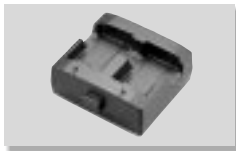
DT-5024LBAT Large-Capacity Battery Pack (3,100mAh)



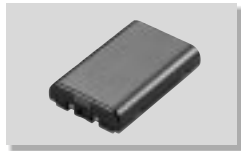
DT-825ADPG AC Adaptor for IT-769CHGE, IT-7601OE Input AC230V  
 DT-825ADPU AC Adaptor for IT-769CHGE, IT-7601OE Input AC120V  
 MPC-577ADP AC Adaptor for DT-5022CHG Input AC100~240V



JK-580CA RS-232C cable between IT-700 and PC  
 DT-887AX RS-232C cross cable between IT-7601OE and PC  
 DT-481RSC RS-232C modem cable  
 DT-882RSC RS-232C cross cable between Satellite I/O Box and PC  
 DT-883RSC RS-232C cross cable between Satellite I/O Box and PC  
 DT-888RSC Modular cable



DT-5022CHGE Dual Battery Charger  
 IT-769CHGE Battery Charger (I/O Box type)



DT-5023BAT Battery Pack (1,550mAh)

## CompactFlash Accessories

- Bar Code Laser
- JK-710DC CompactFlash Digital Camera
- Large CompactFlash Storage Cards

## SPECIFICATIONS

ITEM	IT-70	IT-70RF	
CPU	VR4122 (150 MHz)		
Operating System	Windows CE version 3.0 Pocket PC		
Memory	RAM	32 MB	
	FROM (NAND)	16 MB	
Display	Device(LCD)	Mono, STN	
	No. of dots	240 x 320	
	Backlight	LED	
	Touch-panel	Built-in	
Audio	Microphone	Built-in	
	Speaker	Built-in	
Interface	IrDA port	IrDA Version 1.1	
	Communication port	Serial port (20-pin)	
	CF0 port (External)	Compact flash card, TYPE III	
	CF1 port (Internal)	Compact flash card, TYPE I/II	not available
	Headphone	Built-in	
RF module	Frequency	N/A	2.4 GHz
	Modulation method	N/A	DSSSS
	Protocol	N/A	IEEE802.11b
	Transmission speed	N/A	11 Mbps

ITEM	IT-70	IT-70RF
Power	Main battery	Lithium-ion battery (rechargeable) *
	Sub-battery	CR-2032 (memory backup only)
	Memory backup	4 days (with only CR-2032)
Environment	Drop durability	1.0m
	Operating temperature	-5 to 50°C
	Operating humidity	20 to 80%RH (no condensation)
	Water splash proof	Compliant with IP level 2
Software	Application	Microsoft's Pocket Word, Pocket Excel, ActiveSync, etc. Casio's communication utility, card backup tool, encryption utility, etc.
	Compiler	Yes
	Development tool	Yes
Dimensions	165 (L) x 85 (W) x 27.7 (H) mm	
Weight	Approx. 320g	Approx. 330g

\* Option



for Europe only

FCC

Class B (tested to comply with FCC standards)

UL

approved

(888) 805-9830 • www.casio.com/enterprise

**CASIO**  
the unexpected extra